

## // 09 LUMOLED S3 PRODUCT SERIES

**SQUARE - FUNCTIONAL**

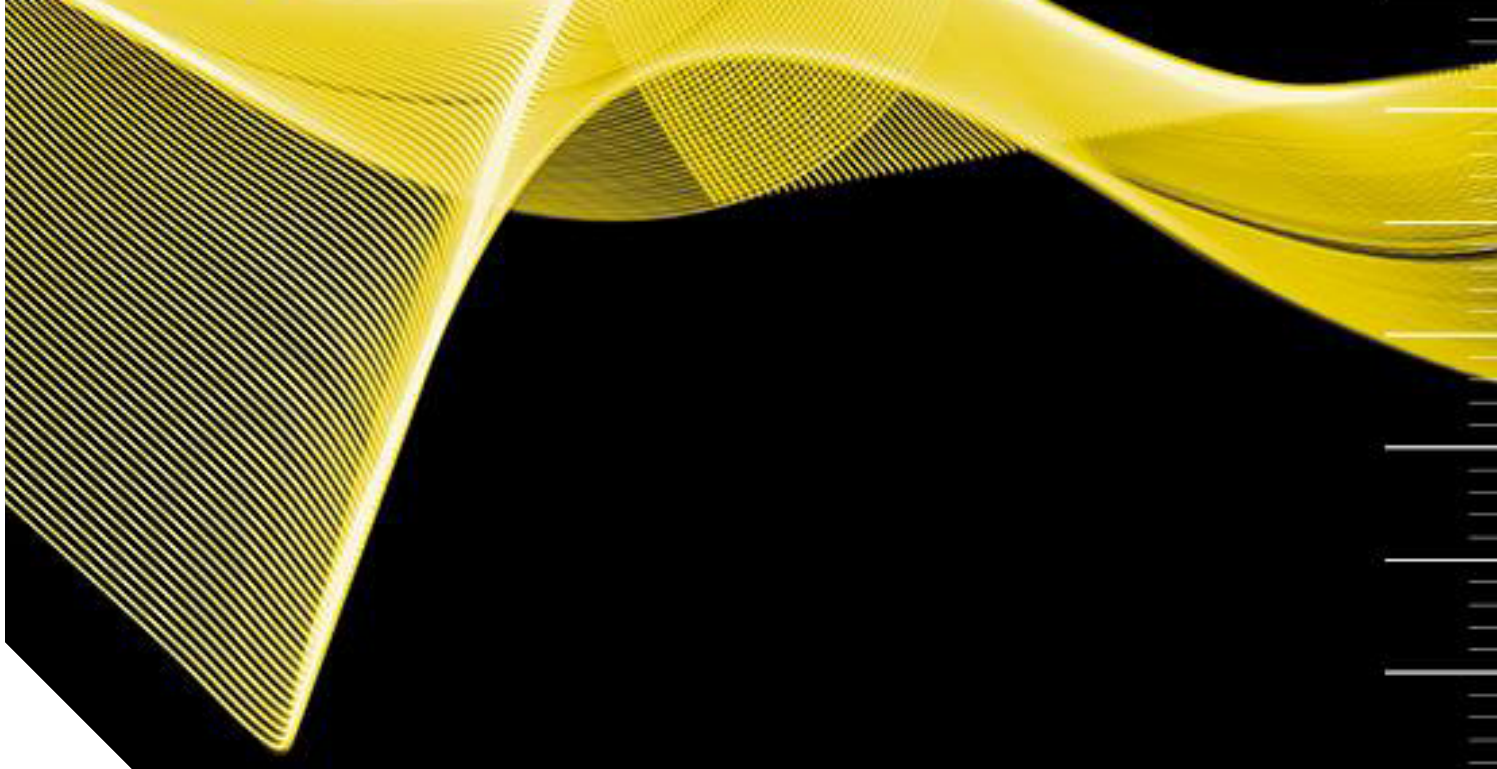
# LumoLED S3

Next time when you are in the workshop, just take a look at the lifting platform – it may well be that you will there find our LumoLED S3 lamps!

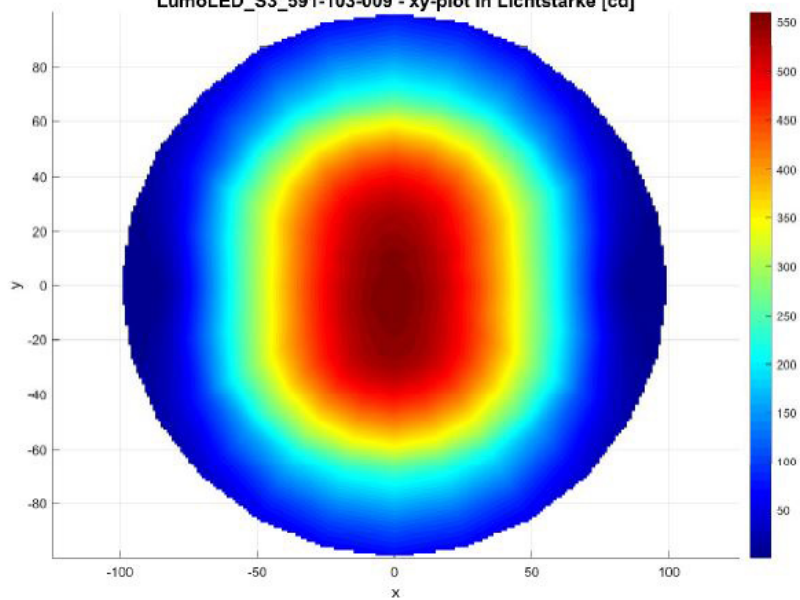
Originally, we developed this product series for use in workshops: Lifting platforms or inspection pits – due to its slim design it fits almost anywhere and its efficient LED luminaire provides optimal illumination.

Thanks to the place-saving installation this TECHMALUX product series has meanwhile not only been used in workshops, but also in other areas! You need much light over a relatively long distance? Should the lamps be suitable for through-wiring? You are looking for a lamp offering a simple mounting option? And the price-performance ratio should, of course, be good?! Please have a look at the next page – we have got something for you!





LumoLED\_S3\_591-103-009 - xy-plot in Lichtstärke [cd]



Distribution of the luminous intensity based on LumoLED S3 | Item no. 591-103-009

# LumoLED S3

## // TECHNICAL DATA

### ITEM NO.: 591-103-009

Operating voltage	230 V AC   50 Hz
Rated output	16 W
Ambient temp.	-5°C - max. 40°C
System of protection	IP67
Protection class	SK I
Weight	1,58 kg
Protective tube	PVC
Type of lighting	Hydraulic lift lamp
Scope of application	Industrial sector



## // LIGHT SOURCES

Lifetime	50.000 h
Colour rendering	Ra = 83
Energy efficiency class	A ++
Luminous flux	2500 lm
Light efficiency	156 lm / W
Light colour	4000 K

## // ELECTRICAL CONNECTION

Cable gland	M16 x 1,5 PA
Internal connection	luster terminal, 3-pole
Internal electrical lines	Multinorm wires

## // FEATURES

- Robust internal aluminium body
- Extremely slim design of 40x40 mm
- Low maintenance & service-friendly
- Good light output – pleasant light colour
- IP67 protection – resistant and durable

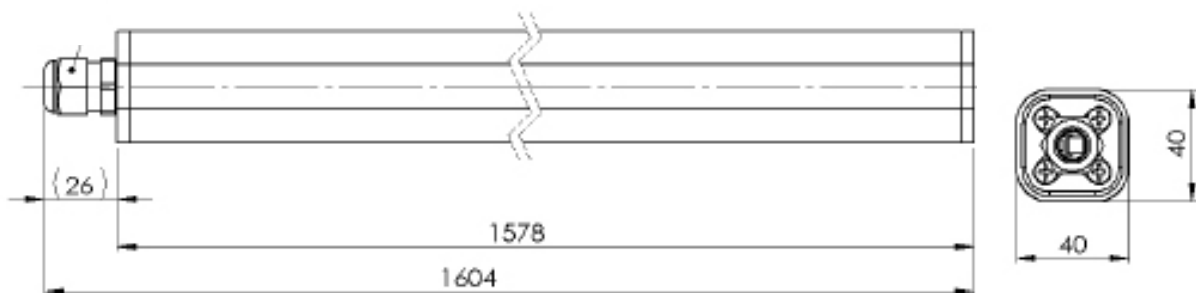
## // SHORT OVERVIEW

TYPE	ITEM NO.	VOLTAGE	POWER	LUMINOUS/ LUMEN	PROTECTIVE TUBE	DIMENSIONS/ MM	CONNECTION
LumoLED S3	591-103-009	230 V AC	16 W	2500	PVC	1578x40x40	cable gland

## // VARIATIONS

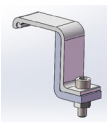
TYPE	ITEM NO.	VOLTAGE	POWER	LUMINOUS/ LUMEN	PROTECTIVE TUBE	DIMENSIONS/ MM	CONNECTION
LumoLED S3	591-103-010	230 V AC	16 W	2500	PVC	1578x40x40	DIN-PLUG
LumoLED S3	591-106-002	230 V AC	12 W	1575	PVC	1071x40x40	cable gland
LumoLED S3	591-111-023	230 V AC	24 W	3700	PVC	1747x40x40	cable gland

## // TECHNICAL DRAWING

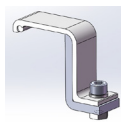


## // FIXING (optional)

Fixing clamps



ITEM NO. 599-001-013  
Fixing clamp 40x40 mm,  
Aluminium, VPE 2 pcs



ITEM NO. 599-001-018  
Fixing clamp 40x40 mm,  
Aluminium, VPE 2 pcs



ITEM NO. 599-001-014  
Fixing clamp 40x40mm,  
TPE 73°Shore



ITEM NO. 599-001-017  
Fixing clamp round,  
Polyamid, VPE 2 pcs

## // STANDARDS

EN 55015:2016-04  
EN 60598-1:2015-10  
EN 62031:2015-09  
EN 61000-4-4:2013-4  
EN 61000-3-2:2015-3  
EN 61000-4-5:2015-03

**TECHMALUX**



### // TECHNICAL DATA

#### ITEM NO.: 591-140-025

Operating voltage	230 V AC   50 Hz
Rated output	20 W
Ambient temp.	-5°C - max. 40°C
System of protection	IP67
Protection class	SK II
Weight	1,6 kg
Protective tube	Polycarbonat
Type of lighting	Hydraulic lift lamp
Scope of application	Industrial sector



### // LIGHT SOURCES

Power	20 W
Power factor	0,89
Lifetime	> 60.000 h
Colour rendering	Ra > 80
Energy efficiency class	A+
Luminous flux	3200 lm
Light efficiency	160 lm / W
Light colour	4000 K

### // ELECTRICAL CONNECTION

Type of connection	Flange plug M12x1   flange receptacle, A-coded, 4-pole
Pin assignment	Pin 1: L; Pin 3: N
Internal connection	Wago-clamps

### // FEATURES

- Through-wiring
- Slim, narrow housing – does not require much space
- Ideal for use in workshops
- Several fastening options – e.g. easy mounting via the end caps also possible – saves time and money!

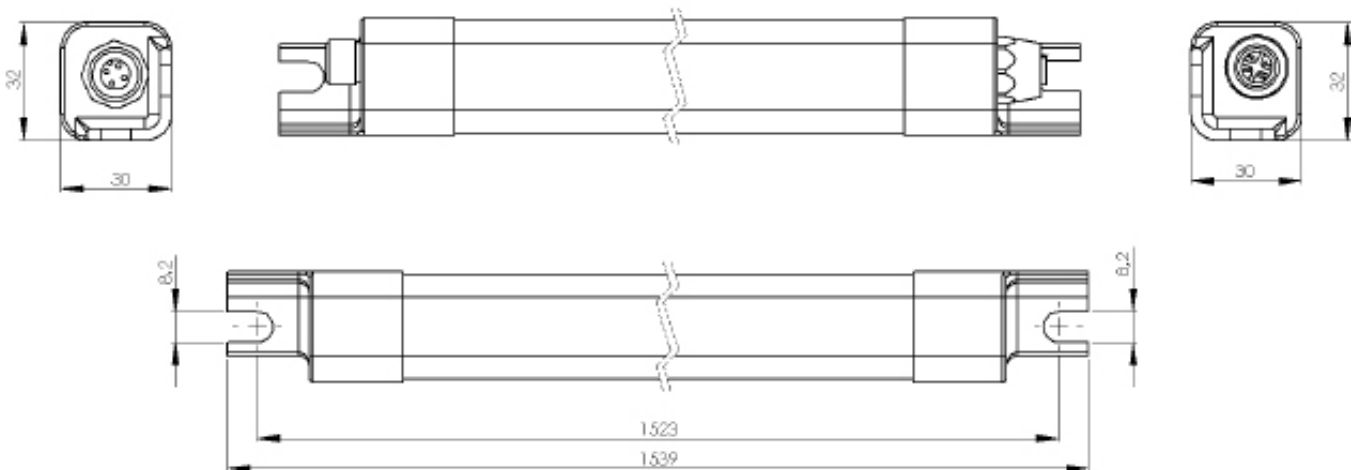
## // SHORT OVERVIEW

TYPE	ITEM NO.	VOLTAGE	POWER	LUMINOUS/ LUMEN	PROTECTIVE TUBE	DIMENSIONS/ MM	CONNECTION
LumoLED S3	591-140-025	230 V AC	20 W	3200	PC	1523x30x32	M12, lateral

## // VARIATIONS

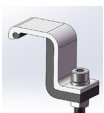
TYPE	ITEM NO.	VOLTAGE	POWER	LUMINOUS/ LUMEN	PROTECTIVE TUBE	DIMENSIONS/ MM	CONNECTION
LumoLED 1000	591-151-002	24 V DC	25,2 W	3150	PC	1540x40x40	M12, lateral

## // TECHNICAL DRAWING



## // FIXING / ACCESSORIES (optional)

Fixing clamp



ITEM NO. 599-001-025

Fixing clamp 32 x 30 mm Al

Unit: 2 pcs /bag

Cable plug M12x1

ITEM NO. 213-080-057

Cable box M12x1

ITEM NO. 213-080-058

## // STANDARDS

EN 55015:2016-04  
 EN 60598-1:2015-10  
 EN 61000-4-4:2013-4  
 EN 61000-3-2:2015-3  
 EN 61000-4-5:2015-03  
 EN 61000-3-3:2014-03

**TECHMALUX**