

// 02 CANDOLUX LEDAX PRODUCT SERIES

BUILT-IN LIGHTING POWER

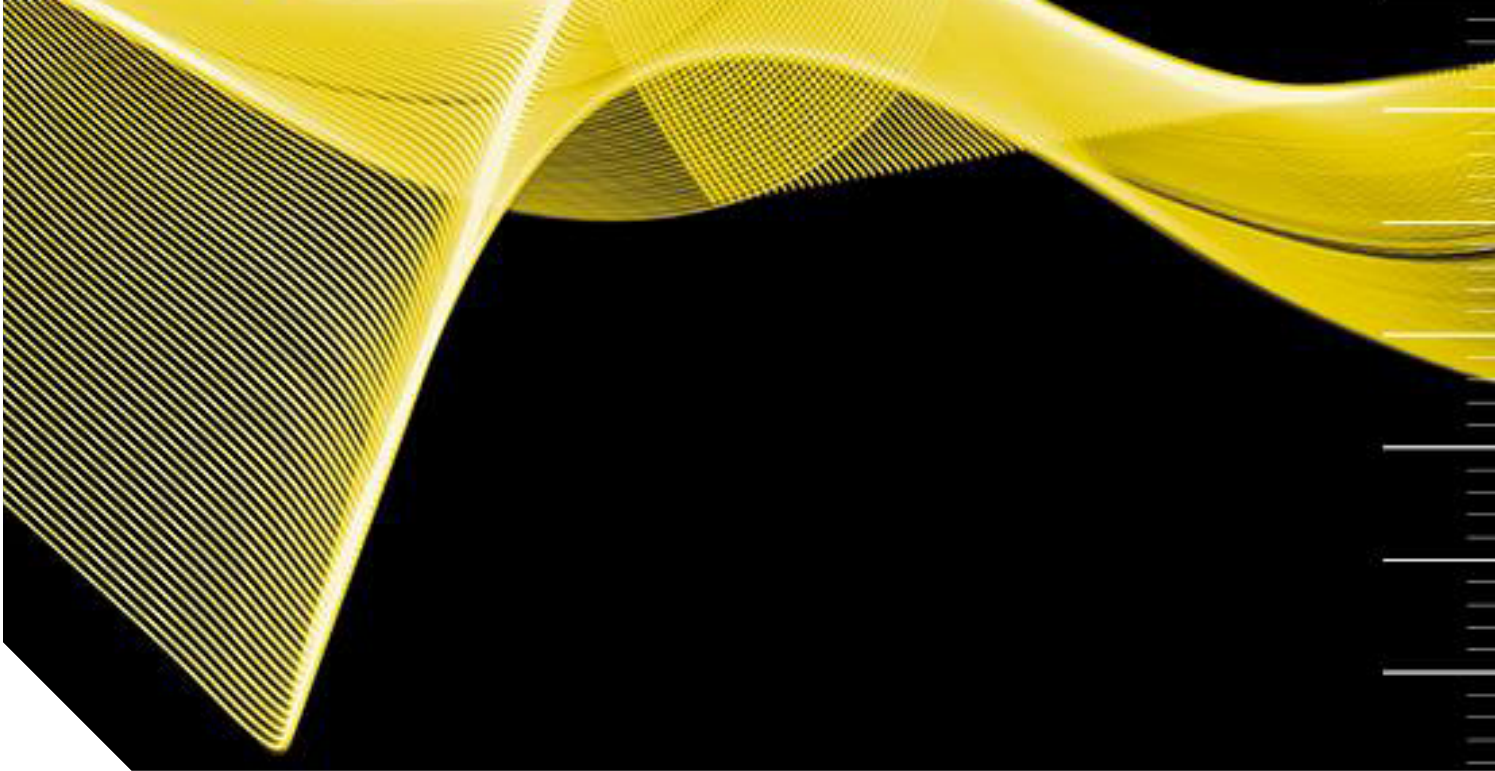
Candolux

Our Candolux recessed lamps can almost be counted among our „classics“. For many years these powerful „power boxes“ have been integrated in the walls of machines and blend in harmoniously to the viewer's eye due to the almost flush-mount installation.

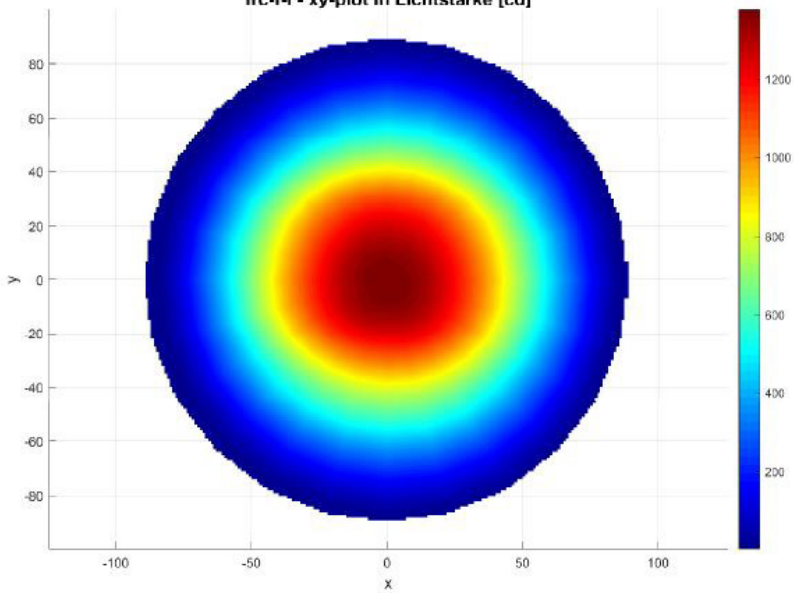
The extremely robust aluminium housing of the lamp is embedded in the machine casing. The front with its ESG safety glass and the highly luminous LED modules remains visible. Whatever will hit our Candolux lamps: chips, water, sparks, ... it will bounce off our Candolux lamps!

We will, of course, offer you within the Candolux product family the variety to which you have become accustomed to:
24 V DC or 230 V AC, clear or satin ESG glass pane,
different dimensions, different performance levels, ...





fr-c-f-l - xy-plot in Lichtstärke [cd]



Distribution of the luminous intensity based on Candolux/034256 | Item no. 592-034-256

Candolux LEDAX 100/027106

// TECHNICAL DATA

ITEM NO.: 592-027-105

Operating voltage	230 V AC 50 Hz
Rated output	31 W
Ambient temp.	-5°C - max. 40°C
System of protection	IP67
Protection class	SK I
Weight	2,7 kg
Glass plate	ESG
Lamp housing	Aluminium, anodized
Type of lighting	built-in lamp
Scope of application	Industrial sector



// LIGHT SOURCES

Number of LEDs	63
Power factor	0,97
Lifetime	> 60.000 h
Colour rendering	Ra > 80
Energy efficiency class	A ++
Luminous flux	3380 lm
Light efficiency	153 lm / W
Light colour	5000 K

// BALLAST (internal)

Operating voltage	230V AC
Power factor	0,95
Output voltage	24V DC
Output power	max. 40 W

// ELECTRICAL CONNECTION

Type of connection	HAN3A; 4-pole
Pin assignment	Pin 1: L; Pin 2: N; PE
Internal electrical lines	Multinorm wires

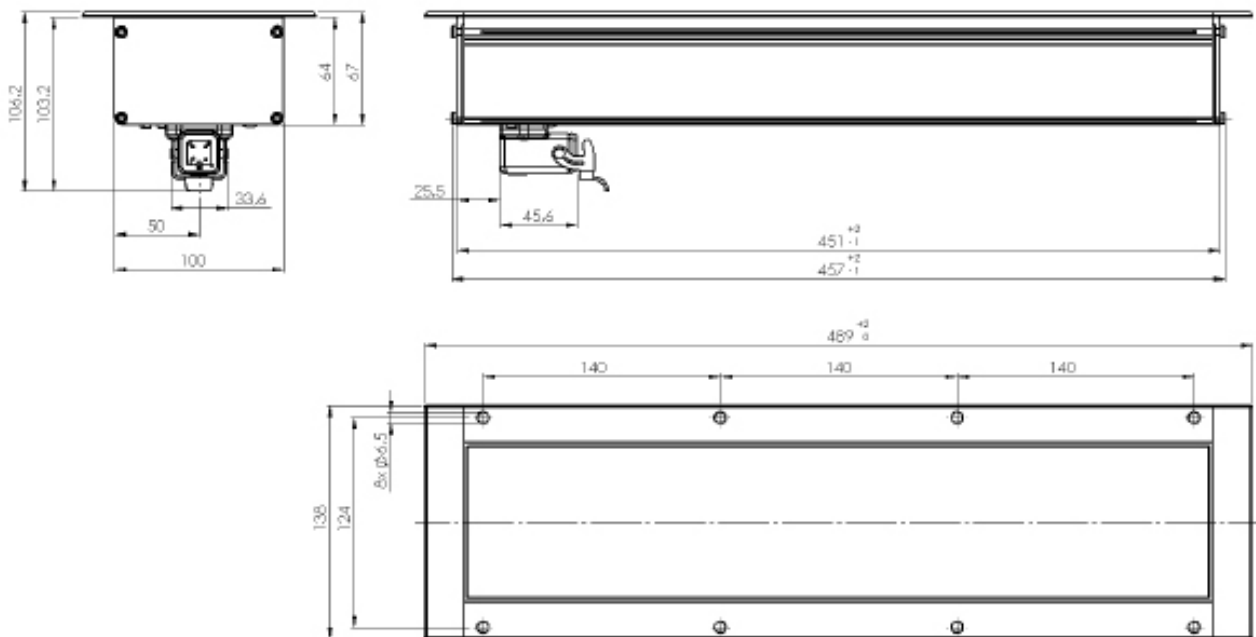
// FEATURES

- Robust housing & slim design
- Protection against temporary submersion
- Simply to connect via HAN 3A connector
- Excellent light output at low power consumption
- Resistant against the most common coolants & lubricants

// SHORT OVERVIEW

TYPE	ITEM NO.	VOLTAGE	POWER	LUMINOUS/ LUMEN	COVERAGE	DIMENSIONS/ MM	PLUG
Candolux LEDAX 100	592-027-105	230 V AC	31 W	3380	ESG, satined	489x138x67	HAN3A

// TECHNICAL DRAWING



// STANDARDS

EN 55015:2016-04
 EN 60598-1:2015-10
 EN 62031:2015-09
 EN 61000-4-4:2013-4
 EN 61000-3-2:2015-3
 EN 61000-4-5:2015-03
 EN 61000-4-2: 2009-12

TECHMALUX

Candolux/033105

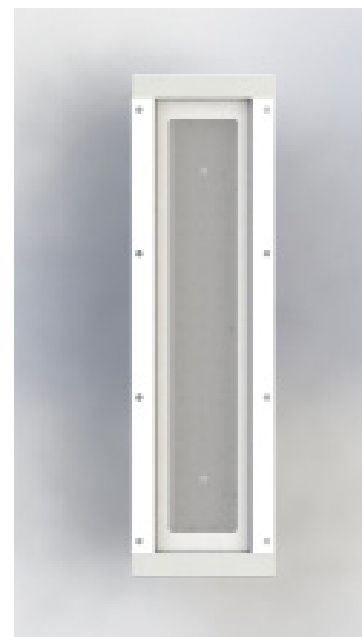
**RGBW
available**



// TECHNICAL DATA

ITEM NO.: 592-033-105

Operating voltage	24 V DC
Rated output	22 W
Ambient temp.	-5°C - max. 40°C
System of protection	IP67
Protection class	SK I
Weight	2,85 kg
Glass plate	ESG
Lamp housing	Aluminium, anodized
Type of lighting	Built-in lamp
Scope of application	Industrial sector



// LIGHT SOURCES

Number of LEDs	63
Current	0,91 A
Lifetime	> 60.000 h
Colour rendering	Ra > 80
Energy efficiency class	A ++
Luminous flux	3380 lm
Light efficiency	153 lm / W
Light colour	5000 K

// BALLAST (external)

Output voltage	24 V DC
Output power	min. 27 W

// ELECTRICAL CONNECTION

Type of connection	HAN3A; 4-pole
Pin assignment	Pin 1: + 24V DC; Pin 3: GND; PE

// FEATURES

- Robust aluminium housing, HAN 3A connector
- 24 V DC
- RGBW variant available!
- Excellent light output – high efficiency
- Anti-glare due to satin ESG glass



// SHORT OVERVIEW

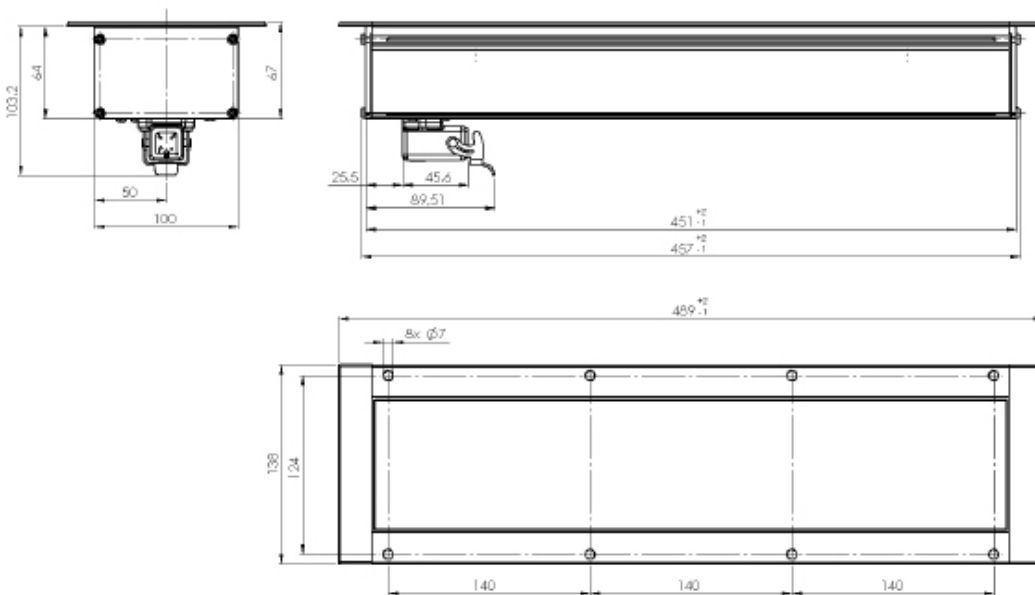
TYPE	ITEM NO.	VOLTAGE	POWER	LUMINOUS/ LUMEN	COVERAGE	DIMENSIONS/ MM	PLUG
Candolux	592-033-105	24 V DC	22 W	3380	ESG, satined	489x138x67	HAN3A

// VARIATIONS

TYPE	ITEM NO.	VOLTAGE	POWER	LUMINOUS/ LUMEN	COVERAGE	DIMENSIONS/ MM	PLUG
Candolux	592-033-110	24 V DC	22 W	3380	ESG, satined	489x138x67	M12, back-mounted
Candolux RGBW	592-027-108	24 V DC	42 W	4000 (W) 360 (RGB)	ESG, satined	489x138x67	M12, back-mounted

Other variations available! For further information, please contact us.

// TECHNICAL DRAWING

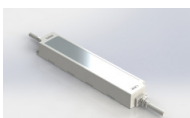


// STANDARDS

EN 55015:2016-04
 EN 60598-1:2015-10
 EN 62031:2015-09
 UL 2108

// ACCESSORIES (optional)

Power supply SELV (IP66)



ITEM NO. 213-820-212

Input: 220-240 V | 0-60 Hz

Output: 24 V DC | max. 40 W

Power supply SELV (IP66)



Art.Nr. 213-820-214

Eingang: 220-240 V | 0-60 Hz

Ausgang: 24 V DC | max. 60 W

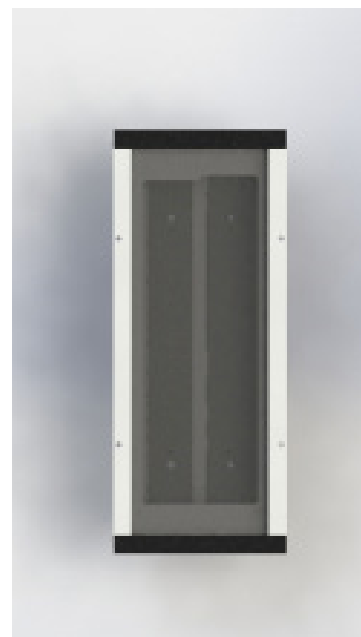
TECHMALUX

Candolux LEDAX 200

// TECHNICAL DATA

ITEM NO.: 592-034-104

Operating voltage	230 V AC 50 Hz
Rated output	51,8 W
Ambient temp.	-5°C - max. 40°C
System of protection	IP67
Protection class	SK I
Weight	4,3 kg
Glass plate	ESG
Lamp housing	Aluminium, anodized
Type of lighting	Built-in lamp
Scope of application	Industrial sector



// LIGHT SOURCES

Number of LEDs	126
Lifetime	> 60.000 h
Colour rendering	Ra > 80
Luminous flux	6732 lm
Light efficiency	153 lm / W
Light colour	5000 K

// BALLAST (internal)

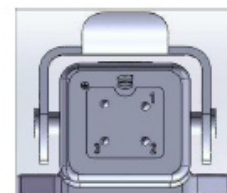
Operating Voltage	230 V AC
Power factor	0,96
Output voltage	24 V DC
Output power	max. 60 W

// ELECTRICAL CONNECTION

Type of connection	HAN3A
Pin assignment	Pin 1: L; Pin 2: N; PE
Internal connection	Wago-clamp
Internal electrical lines	Multinorm wires

// FEATURES

- 230 V variant
- Compact & robust design
- Quick and easy to connect – HAN 3A connector
- Excellent light output – ESG glass pane, clear
- Good price-performance ratio



// SHORT OVERVIEW

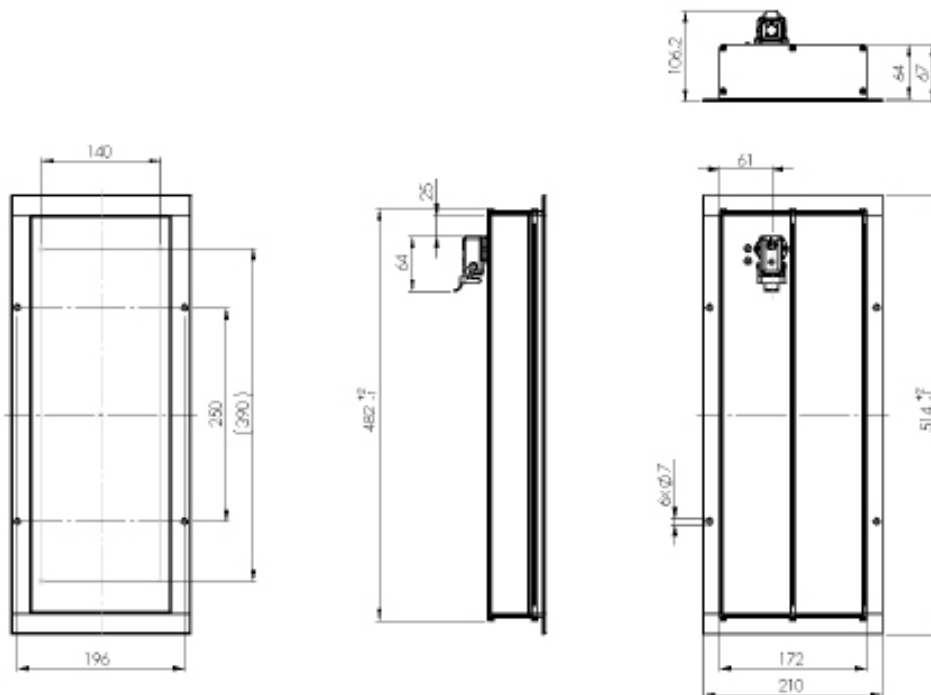
TYPE	ITEM NO.	VOLTAGE	POWER	LUMINOUS/ LUMEN	COVERAGE	DIMENSIONS/ MM	PLUG
Candolux LEDAX 200	592-034-104	230 V AC	51,8 W	6732	ESG, clear glued	514x210x67	HAN3A

// VARIATIONS

TYPE	ITEM NO.	VOLTAGE	POWER	LUMINOUS/ LUMEN	COVERAGE	DIMENSIONS/ MM	PLUG
Candolux LEDAX 200	592-034-107	230 V AC	51,8 W	6732	ESG, clear screwed	516x210x67	HAN3A
Candolux LEDAX 200	592-034-111	230 V AC	51,8 W	6732	ESG, satined	516x210x172	HAN3A, straight
Candolux LEDAX	592-034-114	230 V AC	51,8 W	6732	ESG, clear screwed	514x210x67	HAN3A

Other variations available! For further information, please contact us.

// TECHNICAL DRAWING



// STANDARDS

EN 55015:2016-04
 EN 60598-1:2015-10
 EN 62031:2015-09
 EN 61000-4-4:2013-4
 EN 61000-3-2:2015-3
 EN 61000-4-5:2015-03
 EN 61000-3-3:2014-03

TECHMALUX

Candolux/035103



// TECHNICAL DATA

ITEM NO.: 592-035-103

Operating voltage	24 V DC
Rated output	44 W
Ambient temp.	-5°C - max. 40°C
System of protection	IP67
Protection class	SK I
Weight	4,0 kg
Glass plate	ESG
Lamp housing	Aluminium, anodized
Type of lighting	Built-in lamp
Scope of application	Industrial sector



// LIGHT SOURCES

Number of LEDs	126
Current	1,83 A
Lifetime	> 60.000 h
Colour rendering	Ra > 80
Energy efficiency class	A ++
Luminous flux	6732 lm
Light efficiency	153 lm / W
Light colour	5000 K

// BALLAST (external)

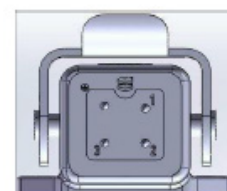
Output voltage	24 V DC
Output power	min. 50 W

// ELECTRICAL CONNECTION

Type of connection	HAN3A
Pin assignment	Pin 1: + 24 V DC; Pin 3: GND; PE

// FEATURES

- High luminous flux & good light output
- Convenient handling – slim design & plug connector
- Very robust lamp housing – reliably resistant
- Anti-glare due to satin ESG glass
- Low installation depth – good integration in the machine wall



// SHORT OVERVIEW

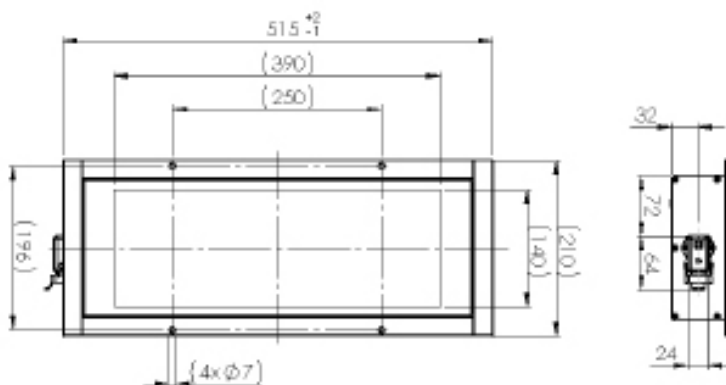
TYPE	ITEM NO.	VOLTAGE	POWER	LUMINOUS/ LUMEN	COVERAGE	DIMENSIONS/ MM	PLUG
Candolux	592-035-103	24 V DC	44 W	6732	ESG, satined	515x210x66	HAN3A

// VARIATIONS

TYPE	ITEM NO.	VOLTAGE	POWER	LUMINOUS/ LUMEN	COVERAGE	DIMENSIONS/ MM	PLUG
Candolux	592-035-106	24 V DC	44 W	6732	ESG, satined	514x210x67	M12, lateral

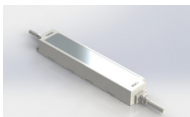
Other variations available! For further information, please contact us.

// TECHNICAL DRAWING



// ACCESSORIES (optional)

Power supply SELV (IP66)



ITEM NO. 213-820-214

Input: 220-240 V | 0-60 Hz

Output: 24 V DC | max. 60 W

// STANDARDS

EN 55015:2016-04
 EN 60598-1:2015-10
 EN 62031:2015-09
 UL 2108

TECHMALUX