

// 01 AULED PRODUCT SERIES

STYLE & FUNCTIONALITY IN PERFECTION

AuLED

What distinguishes our AuLED product series?

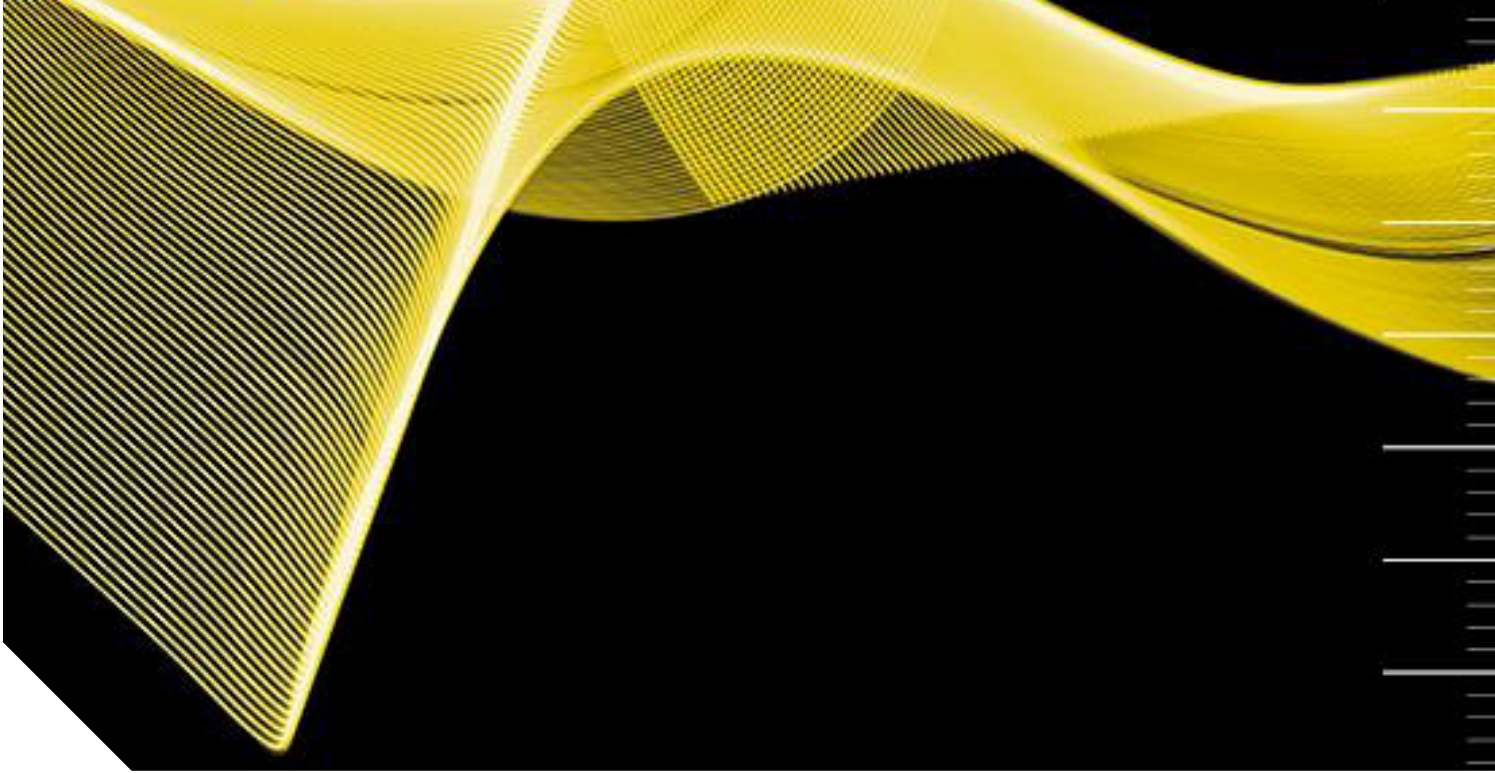
High quality, a straightforward, appealing design, functionality and an enormous range of available model variants, thus offering an unbeatably wide variety of applications.

The AuLED type of lamp is a true „allrounder“, its housing made of aluminium or stainless steel, cooled, as built-in or surface lamp, M8 or M12 connector, pure white light or the combination of all colours ...

please discover on the next pages the great diversity of our AuLED product range.

As diverse as the models available are the potential fields of applications of our AuLED lamps: no matter whether it is in the food industry, classical mechanical engineering, textile industry or in workshops – our AuLED lamps reliably ensure optimal lighting conditions.





AuLED 20/502001

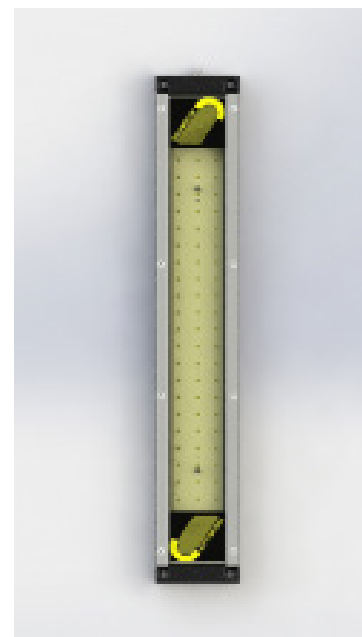
RGBW
available



// TECHNICAL DATA

ITEM NO.: 592-502-001

Operating voltage	24 V DC
Rated output	24 W
Ambient temp.	-5°C - max. 40°C
System of protection	IP67
Protection class	SK II
Weight	1,7 kg
Glass plate	ESG
Lamp housing	Aluminium, anodized
Type of lighting	Surface lamp
Scope of application	Industrial sector



// LIGHT SOURCES

Number of LEDs	63
Current	918 mA
Lifetime	> 60.000 h
Colour rendering	Ra > 80
Energy efficiency class	A ++
Luminous flux	3380 lm
Light efficiency	153 lm / W
Light colour	5000 K

// BALLAST (external)

Output voltage	24 V DC
Output power	min. 28 W

// ELECTRICAL CONNECTION

Type of connection	Flange plug M8x1, 3-pole
Pin assignment	Pin 1: + 24V DC; Pin 3: GND

// FEATURES

- Low installation height – for space-saving installation
- Robust & efficient – that's how a surface lamp should be
- RGBW variant available!
- Very good light output
- Other versions available



// SHORT OVERVIEW

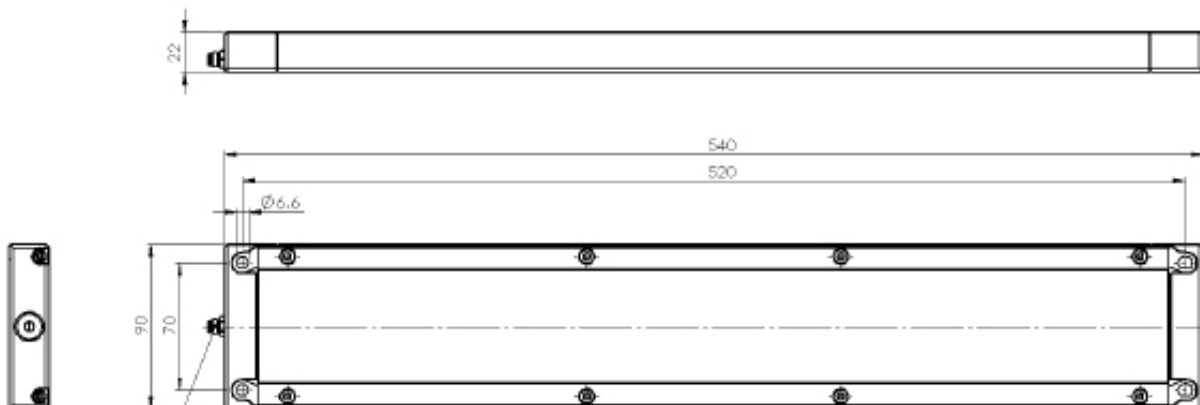
TYPE	ITEM NO.	VOLTAGE	POWER	LUMINOUS/ LUMEN	COVERAGE	DIMENSIONS/ MM	PLUG
AuLED 20	592-502-001	24 V DC	24 W	3380	ESG, satined	540x90x22	M8, lateral

// VARIATIONS

TYPE	ITEM NO.	VOLTAGE	POWER	LUMINOUS/ LUMEN	COVERAGE	DIMENSIONS/ MM	PLUG
AuLED 20	592-502-002	24 V DC	24 W	3380	ESG, clear	540x90x22	M8, back-mounted
AuLED 20	592-502-005	24 V DC	24 W	3380	ESG, satined	540x90x22	M12, lateral
AuLED 20 RGBW	592-502-024	24 V DC	33,6 W	2520 (W) 360 (RGB)	ESG, satined	540x90x22	M12, back-mounted
AuLED 20	592-502-019	24 V DC	24 W	3380	ESG, clear	513x138x25	Han3A
AuLED 20 red/white	592-502-022	24 V DC	13 W 47 W	420 5880	ESG, satined	540x90x22	M12, lateral

Other variations available! For further information, please contact us.

// TECHNICAL DRAWING



// ACCESSORIES (optional)

Power supply SELV (IP66)



ITEM NO. 213-820-212

Input: 220-240 V | 0-60 Hz

Output: 24 V DC | max. 40 W

Connection cable M8

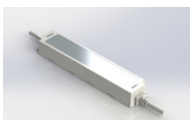


ITEM NO. 214-100-001

System of protection: IP 67

Length = 2 m

Power supply SELV (IP66)



ITEM NO. 213-820-214

Input: 220-240 V | 0-60 Hz

Output: 24 V DC | max. 60 W

// STANDARDS

EN 55015:2016-04
EN 60598-1:2015-10
EN 62031:2015-09
UL 2108

TECHMALUX

AuLED 20/502200

// TECHNICAL DATA

ITEM NO.: 592-502-200

Operating voltage	230 V AC 50 Hz
Rated output	33 W
Ambient temp.	-5°C - max. 40°C
System of protection	IP67
Protection class	SK I
Weight	1,7 kg
Glass plate	ESG
Lamp housing	Aluminium, anodized
Type of lighting	Surface lamp
Scope of application	Industrial sector

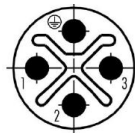


// LIGHT SOURCES

Number of LEDs	60
Power factor	0,99
Lifetime	> 60.000 h
Colour rendering	Ra > 80
Luminous flux	3300 lm
Light efficiency	100 lm / W
Light colour	5000 K

// ELECTRICAL CONNECTION

Type of connection	Flange plug M12x1, 4-pole (S-coded)
Pin assignment	Pin 1: L; Pin 3: N; Pin 4: PE



// FEATURES

- Connection directly to 230 V
- Various designs available – in-built or surface
- No additional ballast required
- Flat and robust aluminium housing
- ESG glass

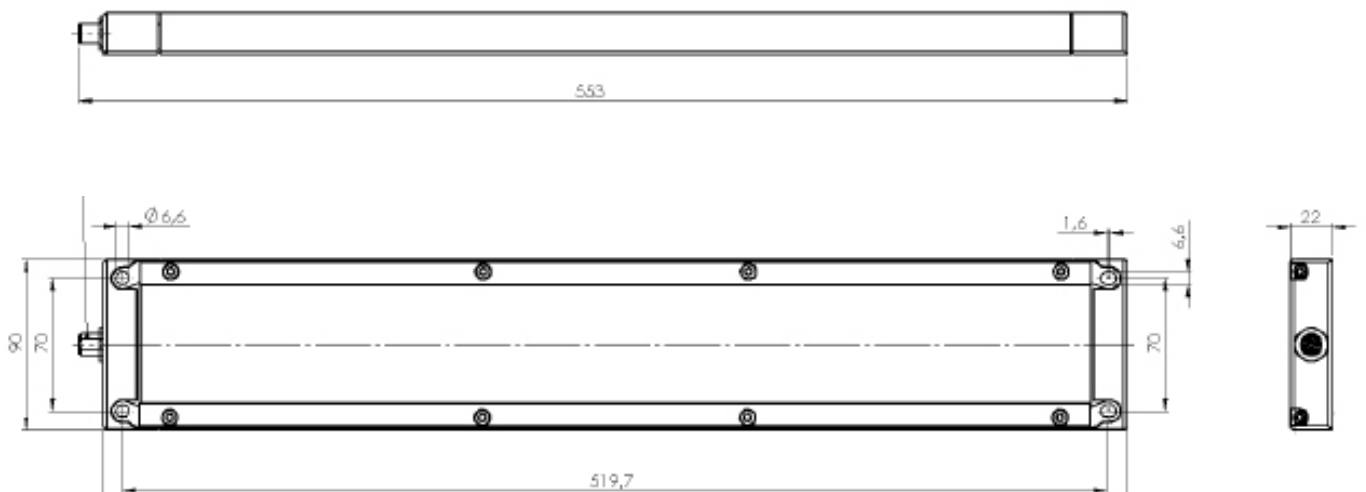
// SHORT OVERVIEW

TYPE	ITEM NO.	VOLTAGE	POWER	LUMINOUS/ LUMEN	COVERAGE	DIMENSIONS/ MM	PLUG
AuLED 20	592-502-200	230 V AC	33 W	3300	ESG, satined	553x90x22	M12, lateral

// VARIATIONS

TYPE	ITEM NO.	VOLTAGE	POWER	LUMINOUS/ LUMEN	COVERAGE	DIMENSIONS/ MM	PLUG
AuLED 20 built-in	592-502-250	230 V AC	33 W	3300	ESG, satined	513x138x25	M12, lateral

// TECHNICAL DRAWING



// ACCESSORIES (optional)

Cable box

M12x1 | 4-pole | S-coded

ITEM NO.: 213-080-046

// STANDARDS

EN 55015:2016-04
 EN 60598-1:2015-10
 EN 62031:2015-09
 EN 61000-4-4:2013-4
 EN 61000-3-2:2015-3
 EN 61000-4-5:2015-03
 EN 61000-3-3:2014-03
 EN 61000-4-2: 2009-12

TECHMALUX